



University of Bologna - AISSA - SIS

*Impact evaluation of policies and projects for agricultural and rural development*

Italian Pavilion at EXPO, Milan, 23 August 31 2015

# **COMMON AGRICULTURAL POLICY AND AGRI-ENVIRONMENT PRESERVATION**

***Challenges for monitoring and evaluation of  
environmental impacts***

Andrea Povellato

Italian Rural Network

Council for Agricultural Research and Economics, CREA-INEA





INSIGHTS | PERSPECTIVES

**Science**, June 2014

AGRICULTURE POLICY

## *EU agricultural reform fails on biodiversity*

Extra steps by Member States are needed to protect farmed and grassland ecosystems

**TheObserver**

Saturday 24 November 2012

**British bird species 'face extinction' if EU cuts £8bn agriculture subsidy**





# Content

- Common Agricultural Policy (1<sup>st</sup> and 2<sup>nd</sup> pillar)
  - Why do we need to evaluate agricultural and rural policy?
- Guidelines for the evaluation:
  - What do we need?
  - What is the structure and the content?
- Emerging key issues for environmental evaluations
- Methodological challenges faced by ENVIEVAL





# Common Agricultural Policy (2° Pillar → Rural Development Policy)

- Highly important in **European identity**, development and cohesion;
- **Multi-stranded** and dealing with communities, social development, services, environmental quality, farm and forest development;
- Presenting very **different challenges in different places**;
- **Recognising the complexity** of the challenge;
- **Focusing** on collectively agreed limited number of **objectives**;
- **Complementary to national policies** that support rural development;
- Giving **“room for manoeuvre”** for member states following the subsidiarity principle.





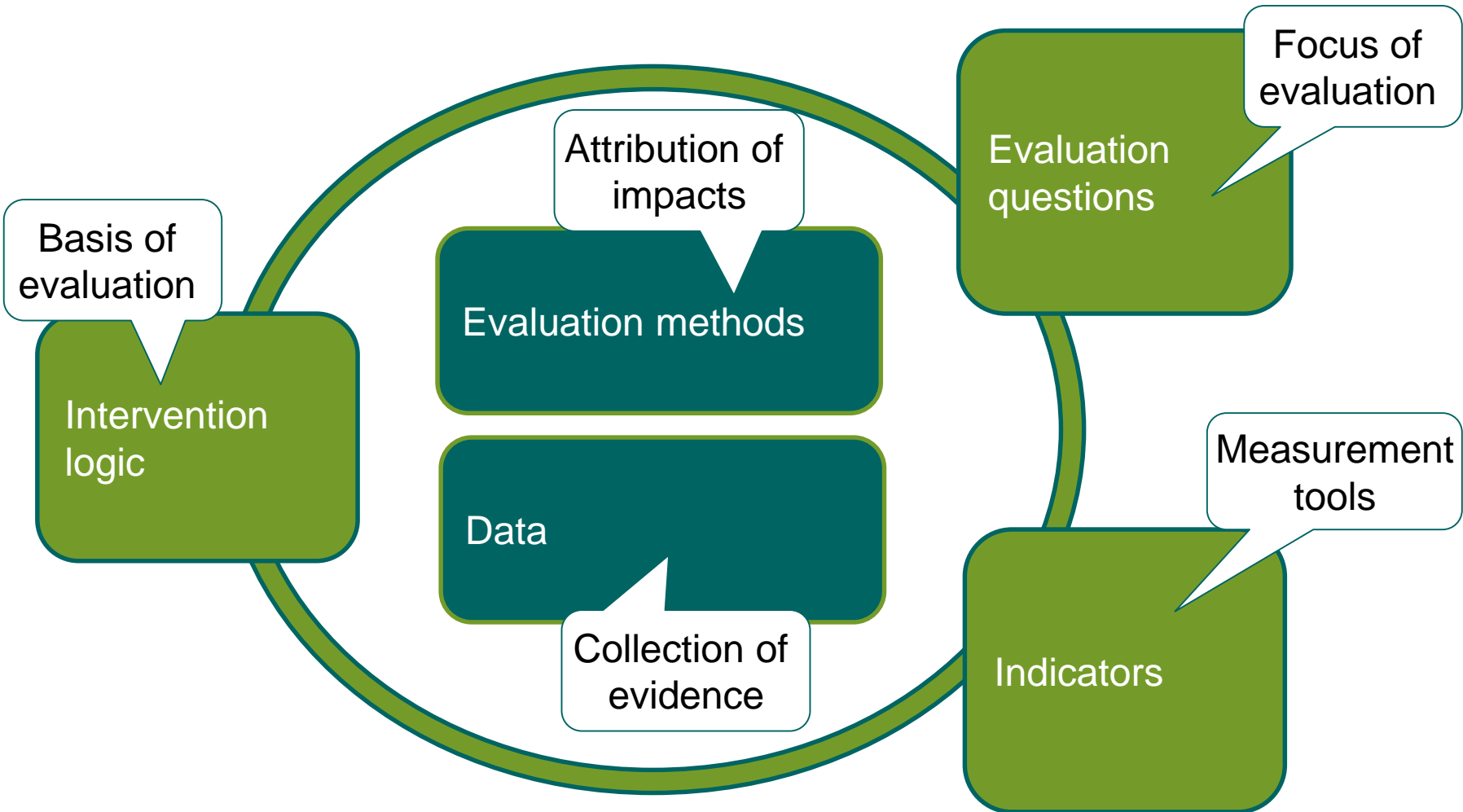
# What do we need?

- **Better accountability** demanded by society
- More **comparability** at the EU level
- Stronger **commitment** to effective evaluation by MSs
- Stronger **learning culture** in the evaluation community to understand better how RDPs are performing
- **Enhance** the design and implementation of the **CMEF/CMES** and **support evaluation stakeholders** to conduct the evaluation





# What is the structure?





# What could be a benefit from a research project?

- Data needed for selected methods
- CMES-relevance (use of common rural development indicators, specific indicators)
- Concrete working steps
- Resource implication for chosen methods
- Critical assessment of strengths and weaknesses of methods



# What is ENVIEVAL? a 7FP Research Project

(Development of new methodological frameworks for the evaluation of environmental impacts of RDP)

## Who is ENVIEVAL?

Participant no.	Participant organisation name	Country
01	Johann Heinrich von Thünen Institut (TI)	Germany
02	James Hutton Institute (JHI)	UK
03	Agricultural University of Athens (AUA)	Greece
04	Natural Resources Institute Finland (LUKE)	Finland
05	Council for Agricultural Research and Economics (CREA-INEA)	Italy
06	Baltic Environment Forum (BEF)	Lithuania
07	Szent Istvan University (SZIE)	Hungary

Project duration: January 2013 – December 2015



## Challenges need to be addressed

- Linkages between different levels of indicators and different rural development measures;
- Complexity and data requirements of existing and additional impact indicators;
- Counterfactual development for measures implemented across large areas;
- Quantification of net impacts at macro-level and establishing cause-effects relationships;
- Influence of site-specific circumstances, time gap of impacts and impacts of other intervening factors.

## What is ENVIEVAL about? Some general aspects

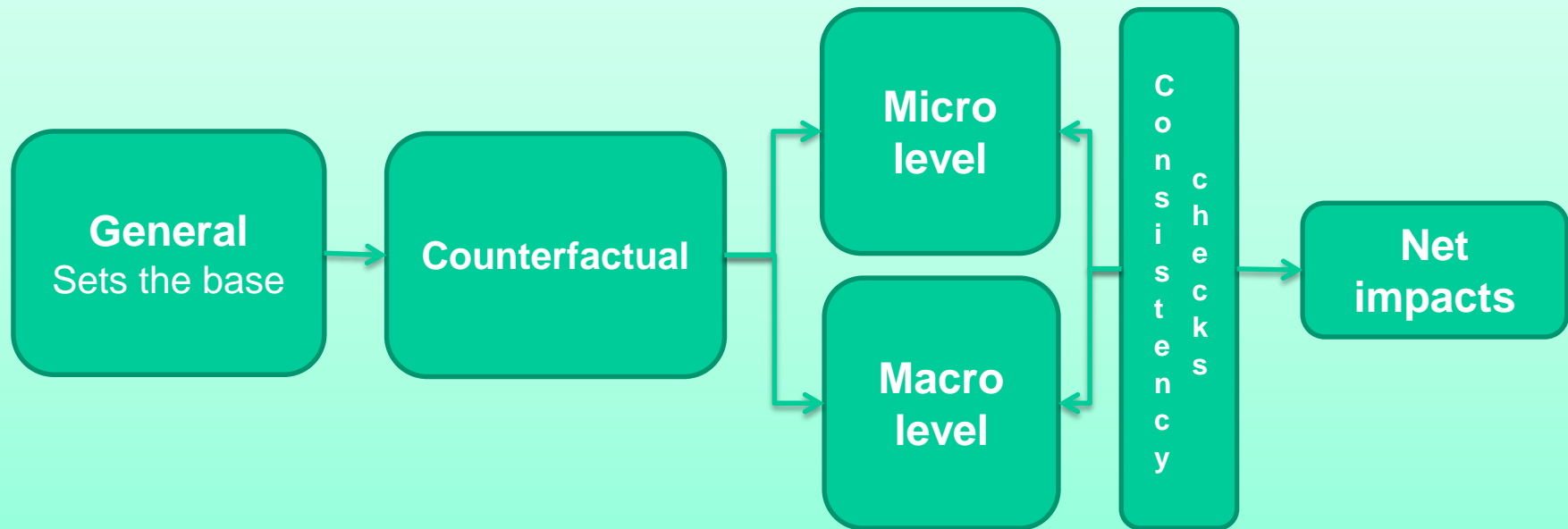
- Wide range of new methodological developments needs to be considered
- Flexible methodological framework – not one method serves all purposes
- Consistency and integration of micro and macro level evaluation methods
- Public good case study approach to test suitability of methods for environmental impact evaluation
- Public goods considered:
  - ❖ Climate stability
  - ❖ Biodiversity – wildlife and HNV
  - ❖ Water quality – diffuse pollution
  - ❖ Soil functionality – soil health
  - ❖ Landscapes – landscape character
  - ❖ Animal welfare

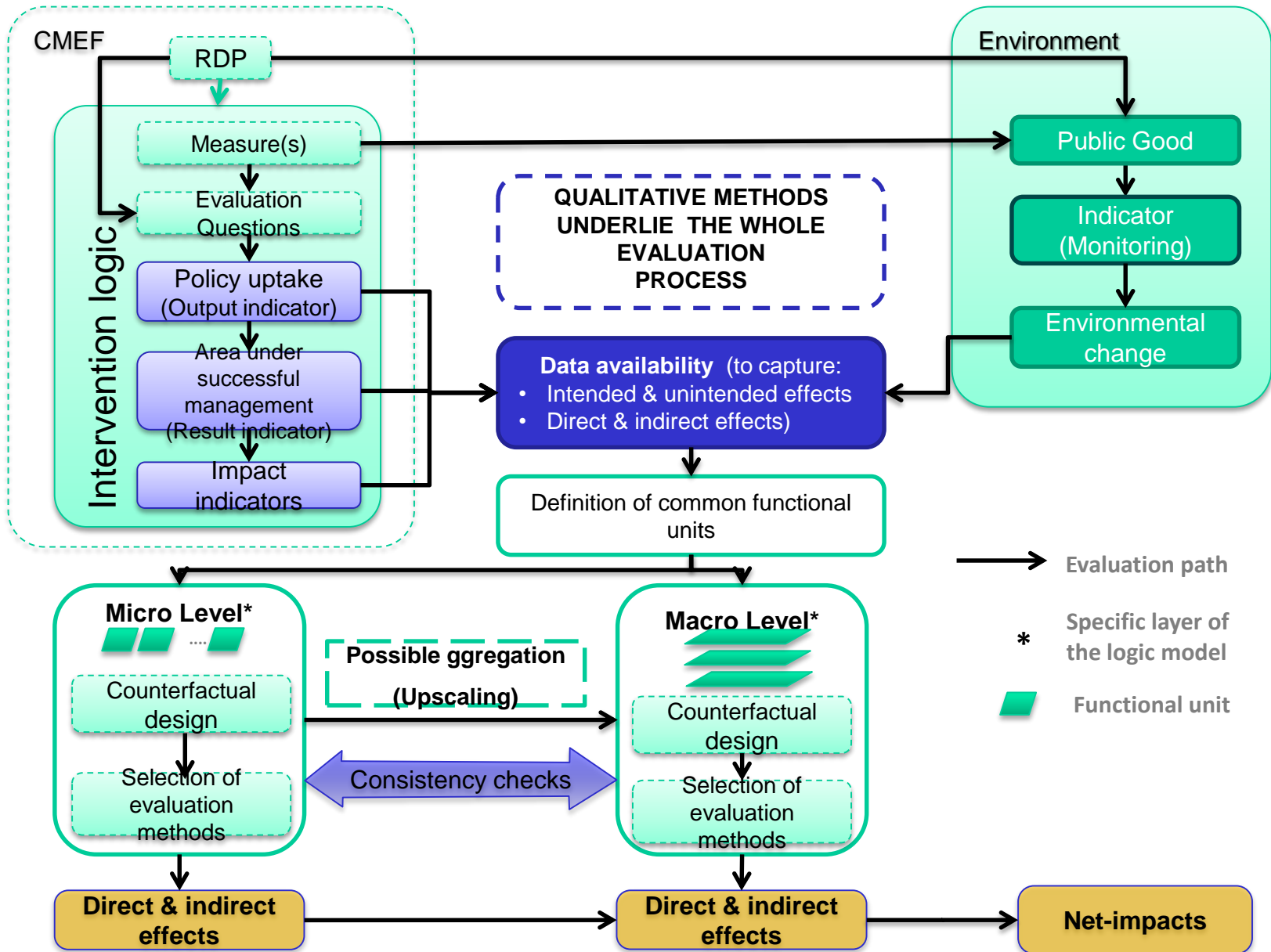
# The concept of logic model

- The logic models assist:
  - Evaluators to find a sound evaluation design for the task at hand
  - Managing authorities to assess the feasibility of evaluation plans and/or the quality of evaluation results
- Step-by-step structure and flow enable understanding:
  - **POSSIBILITIES:** what are available suitable combinations of data/indicators/methods to answers the evaluation questions and/or
  - **REQUIREMENTS:** what data/indicators/methods are required to answer certain evaluation questions
- Nested structure with different layers:
  - General → Counterfactual → Micro → Macro → Net Impacts

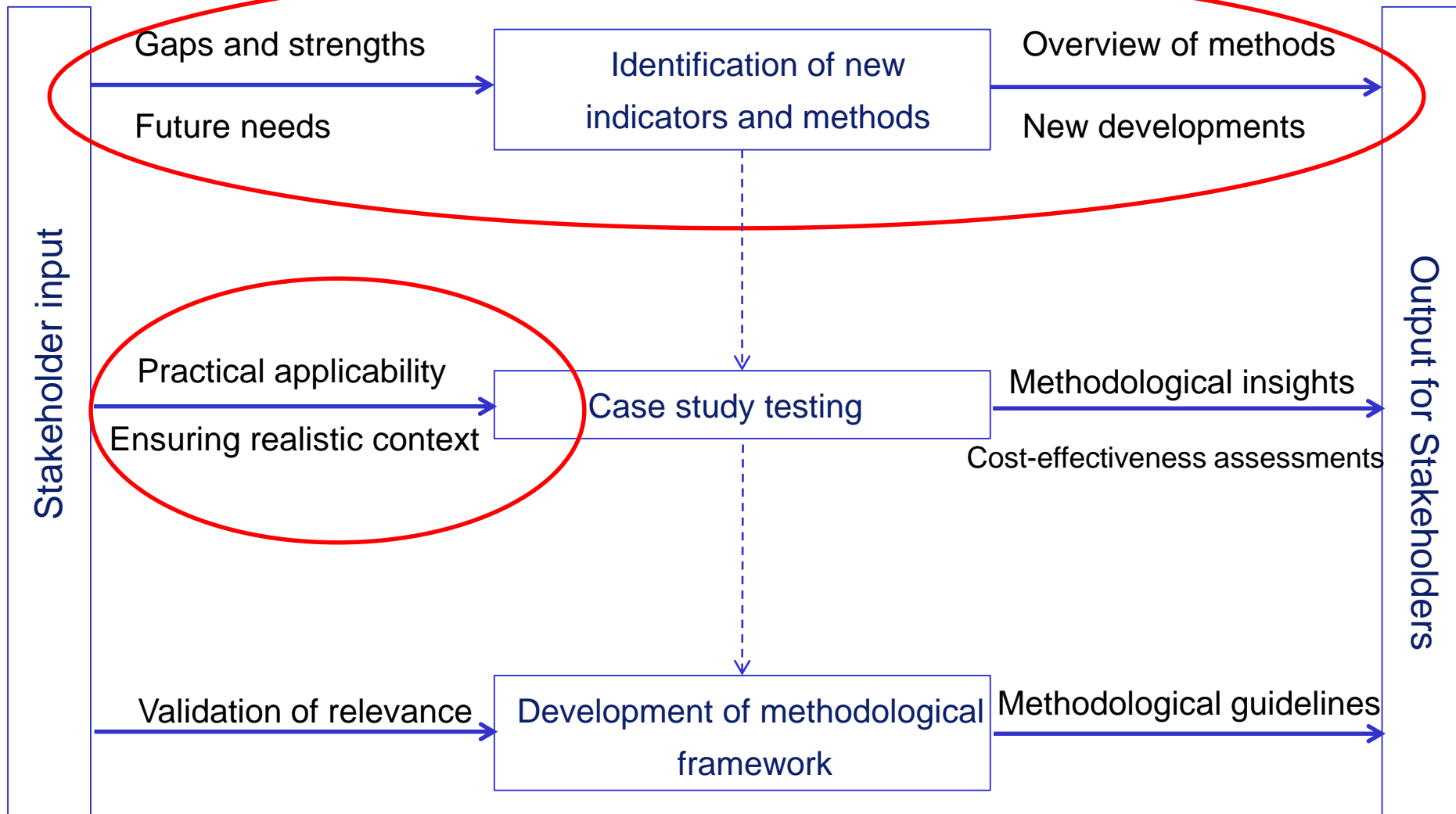
# Simplified logic model flow of evaluation

Underlying qualitative analysis on causal links and intervening factors etc.





# Importance of stakeholder involvement



## What does ENVIEVAL expect to achieve?

- Inventory of existing indicator sets, monitoring approaches and evaluation methods
- Synthesis of strengths and gaps of used indicators and methods
- Identification of candidate indicators and methods for the public good case studies
- Stakeholder and case study based validation of the suitability of new evaluation methods for environmental impact assessment in future RDP evaluations
- Cost-effectiveness assessment of the new evaluation tools
- Methodological handbook for the selection and application of cost-effective evaluation methods

# Methodological handbook

- Guidelines of the Helpdesk:
  - Valuable guidelines on the intervention logic of the CMES (CMEF) and how to consistently evaluate outputs, results and impacts
  - Methodological advice on how to evaluate direct and indirect effects of CMES indicators
  - Less focus on specific environmental indicators and methods
  
- Added value of the ENVIEVAL handbook:
  - Particular focus on methodological aspects of environmental evaluations – flexible framework methodological framework for environmental evaluations
  - Key issues of a range of environmental indicators and methods covered





Thank you for the attention!  
[www.envieval.eu](http://www.envieval.eu)  
[povellato@inea.it](mailto:povellato@inea.it)

