

Arco del Meloncello

Isola Almaverde Bio
Scopri dove trovare le Isole

Giardino Vittorio Melloni

Via XXI Aprile-1945

Via Francesco Roncati

SS64



Porta Saragozza

Teatro Celebrazioni

Cremeria Funivia

Parco Robert e Olawe Baden Powell

Punto panoramico salita di San Luca

Università di Bologna - Scuola di Ingegneria...



5:30 pm

Orfanelle San Luca

Via di Ravone

Via di Casaglia

Villa dei Marchesi Scarani

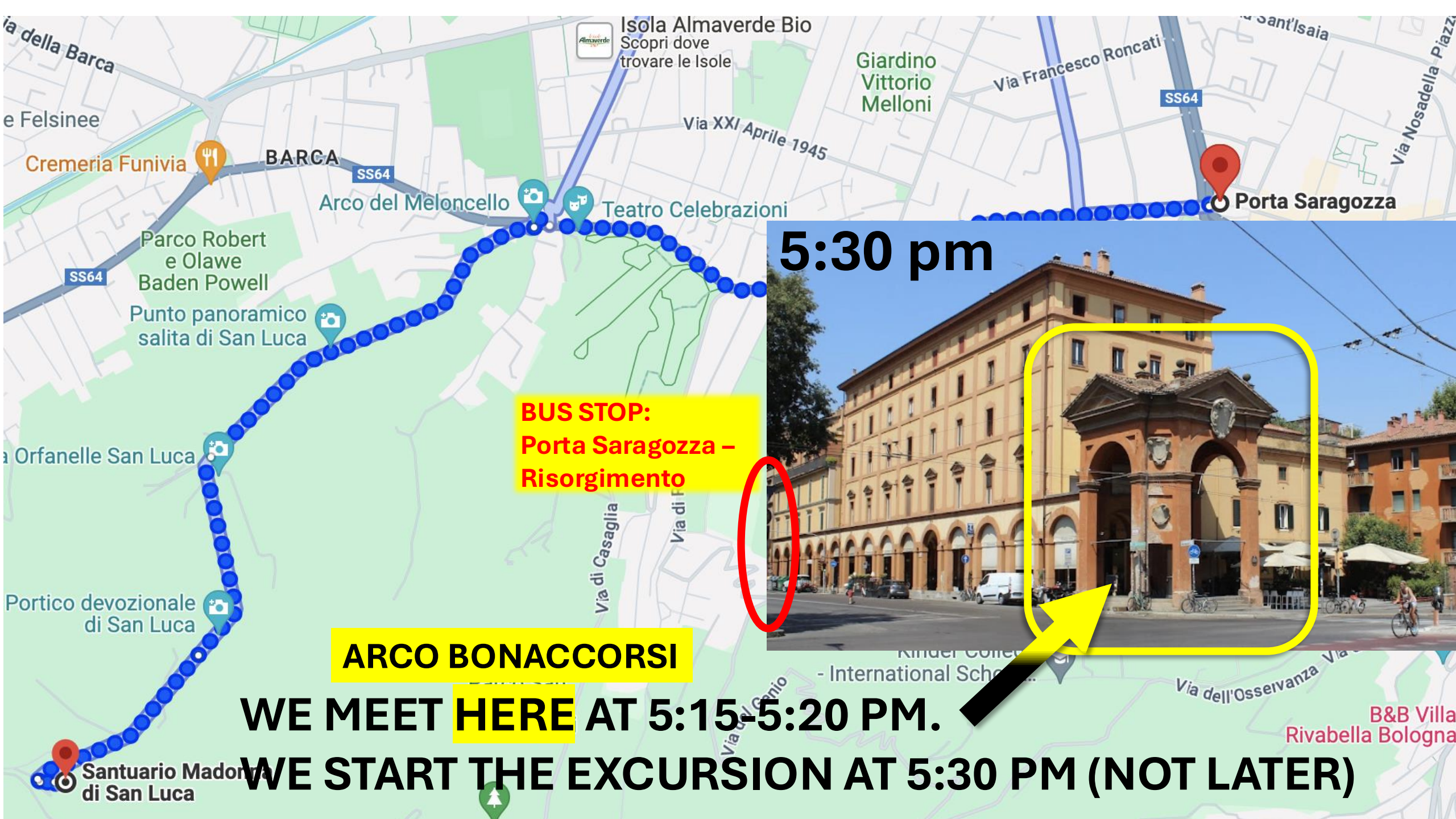
Kinder College - International School...

Via dell'Osservanza

B&B Villa Rivabella Bologna

Santuario Madonna di San Luca





5:30 pm

**BUS STOP:
Porta Saragozza –
Risorgimento**

ARCO BONACCORSI

WE MEET **HERE AT 5:15-5:20 PM.**

WE START THE EXCURSION AT 5:30 PM (NOT LATER)

B&B Villa
Rivabella Bologna

1.5 KM – WALK UNDER THE PORTICI (FLAT PATH)



6:00 pm



Cremeria Funivia



Parco Robert e Olawe Baden Powell

Punto panoramico salita di San Luca



Orfanelle San Luca



Portico devozionale di San Luca



Santuario Madonna di San Luca



Isola Almaverde Bio Scopri dove trovare le Isole

Giardino Vittorio Melloni

Via XXI Aprile-1945

Via Francesco Roncati

SS64

Arco del Meloncello

Teatro Celebrazioni

SS64

Università di Bologna - Scuola di Ingegneria...

5:30 pm



Porta Saragozza

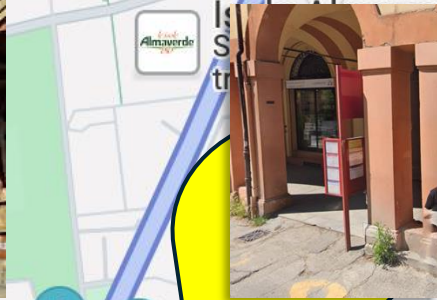
Villa dei Marchesi Scarani

Kinder College - International School...

Via dell'Osservanza

B&B Villa Rivabella Bologna

6:00 pm



**BUS STOP:
MELONCELLO**

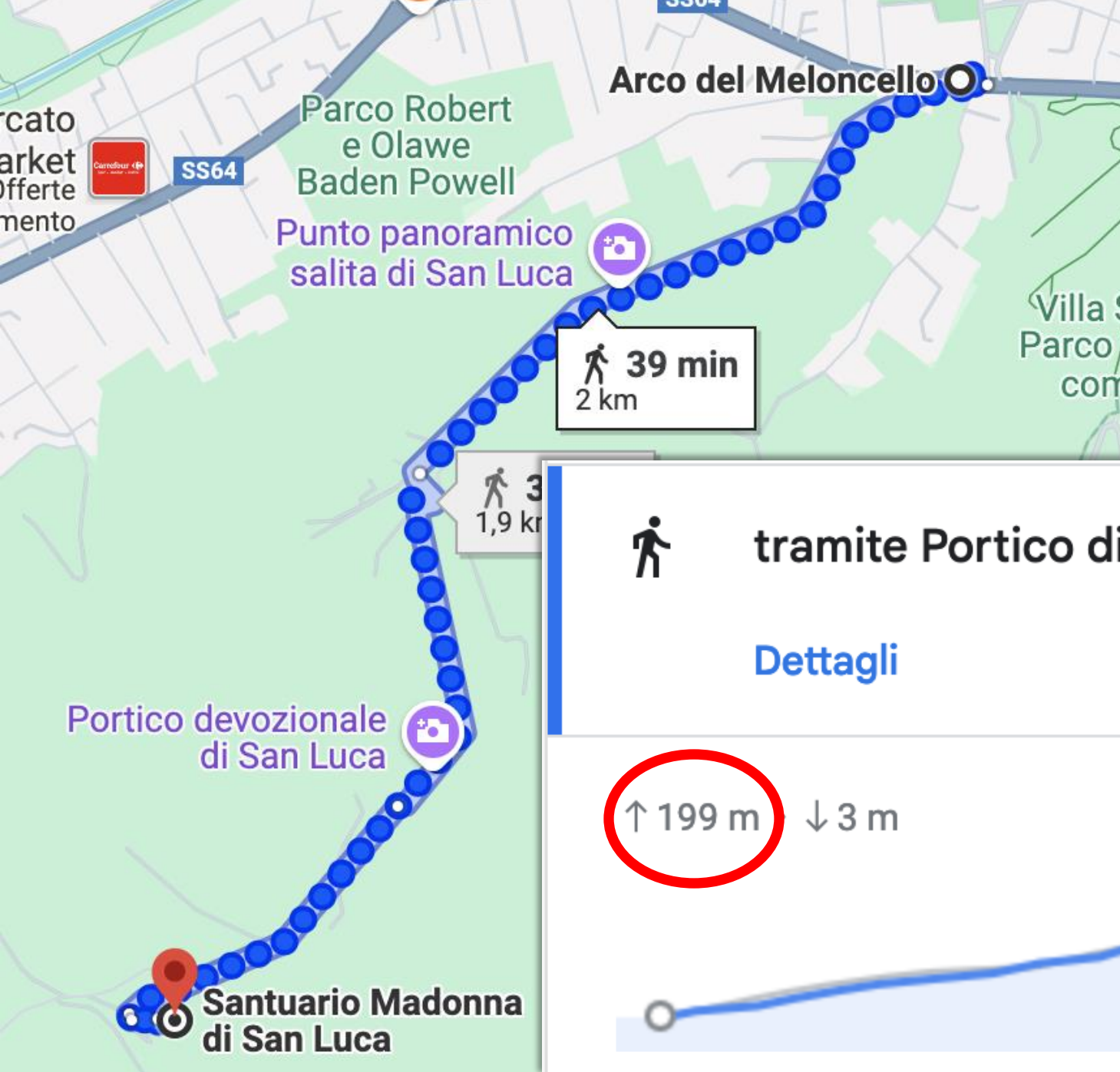


ARCO del MELONCELLO

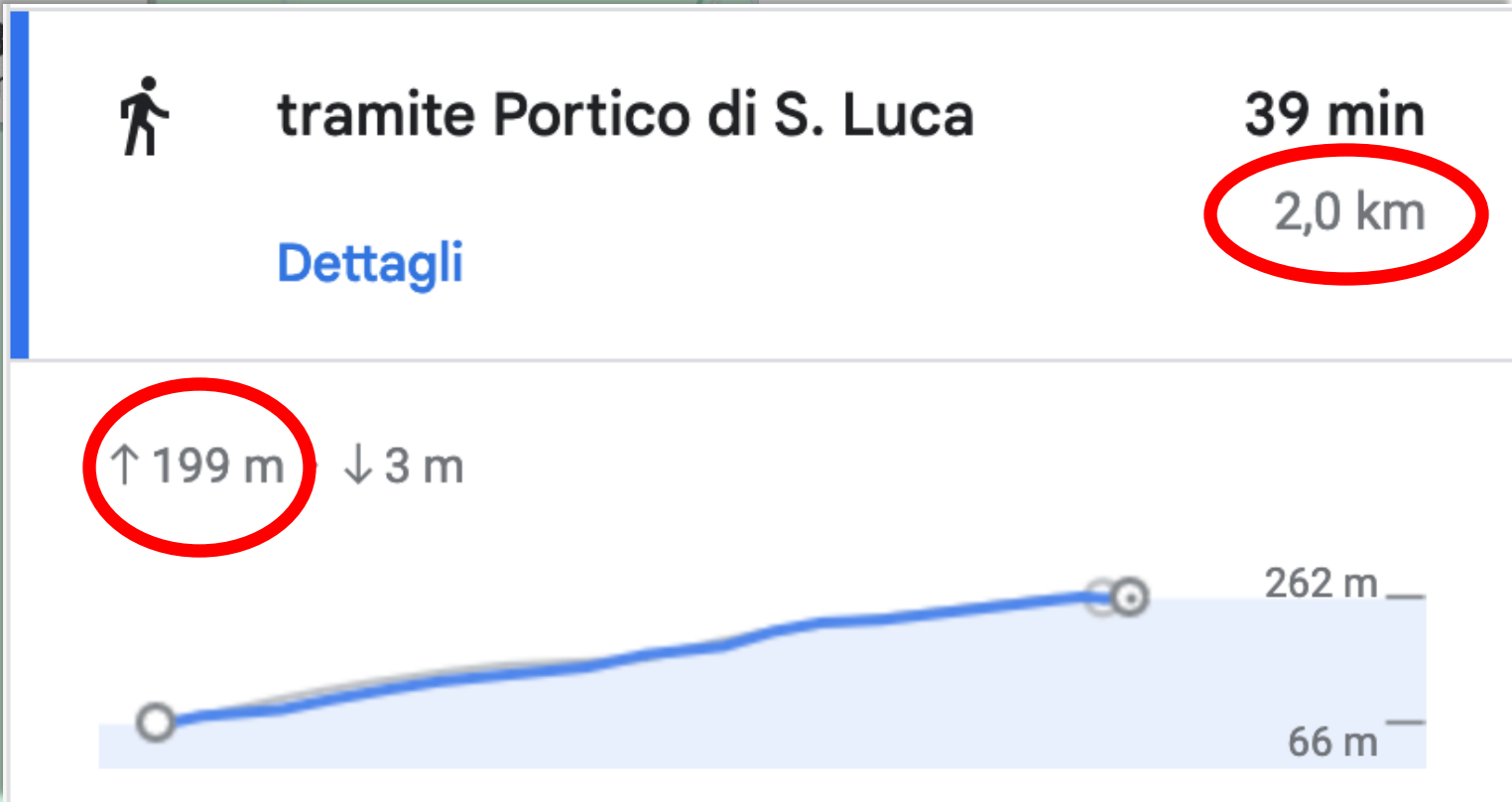


**WE MEET HERE
AT 5:50-5:55 PM.
WE START THE
"CLIMB UP"
AT 6:00 PM (NOT LATER)**





**This second part of the walk is quite steep:
498 steps (2 km)
~200 m of altitude difference**



**ARRIVAL Santuario
Madonna di San
Luca at:
6:45 PM (approx)**



IF YOU DO NOT WANT TO WALK BACK:

58

Basilica di San Luca - Villa Spada



In vigore dal 7 Giugno al 15 Settembre 2024

da lunedì a venerdì

←
nota

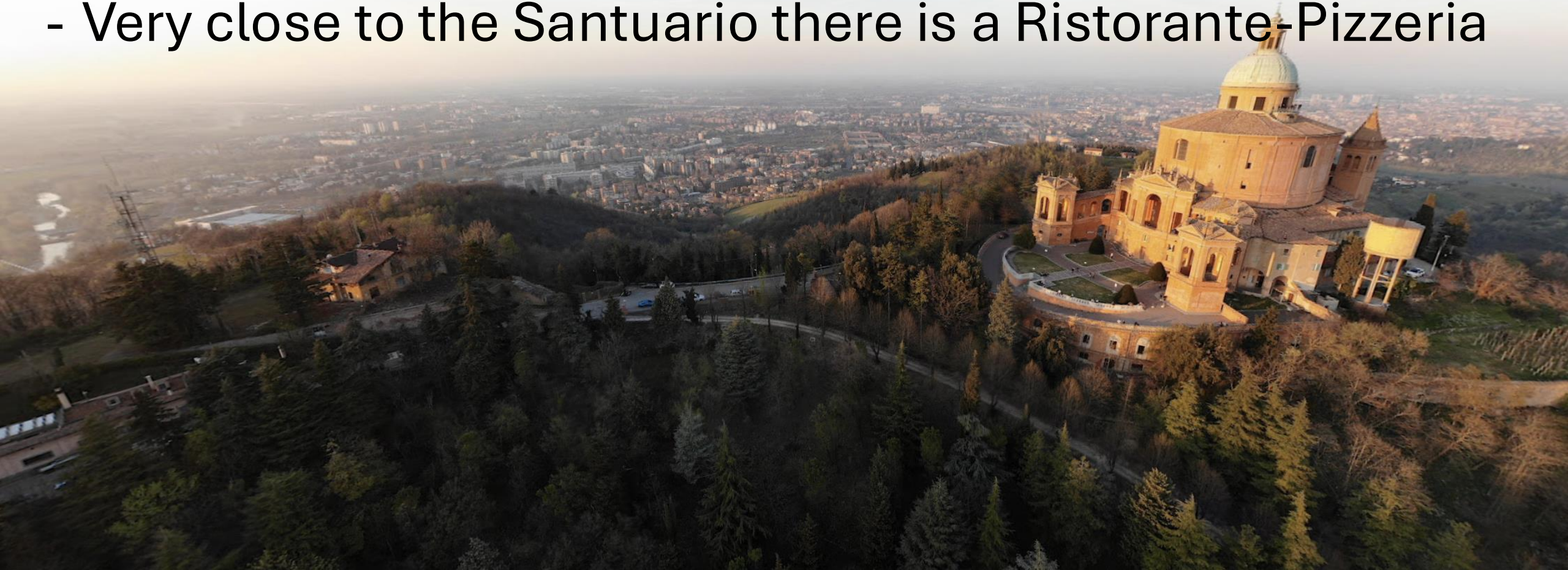
BASILICA DI SAN LUCA	07.20	07.50	08.20	08.50	09.20	09.50	12.20	12.50	13.20	13.50	14.20	17.20	17.50	18.20	18.50	19.20
SAN LUCA 35	07.21	07.51	08.21	08.51	09.21	09.51	12.21	12.51	13.21	13.51	14.21	17.21	17.51	18.21	18.51	19.21
SAN LUCA 15	07.23	07.53	08.23	08.53	09.23	09.53	12.23	12.53	13.23	13.53	14.23	17.23	17.53	18.23	18.53	19.23
MELONCELLO	07.25	07.55	08.25	08.55	09.25	09.55	12.25	12.55	13.25	13.55	14.25	17.25	17.55	18.25	18.55	19.25
VILLA SPADA	07.27	07.57	08.27	08.57	09.27	09.57	12.27	12.57	13.27	13.57	14.27	17.27	17.57	18.27	18.57	19.27

BE AWARE: the last ride is at 7:20 pm

THE CHURCH CLOSES AT 7 PM
THE COURTYARD CLOSES AT 7:30 PM
THE PORTICO IS ALWAYS OPEN

BE AWARE:

- **NO GUIDE** (it is NOT a guided tour)
- Along the climb up there are no shops
- At the Santuario there is a fountain (water refill available)
- Very close to the Santuario there is a Ristorante-Pizzeria



GET READY:

- <https://www.santuariodisanluca.it/eng/>
- <https://www.bolognawelcome.com/en/blog/san-luca-eng>
- https://en.wikipedia.org/wiki/Madonna_di_San_Luca,_Bologna

